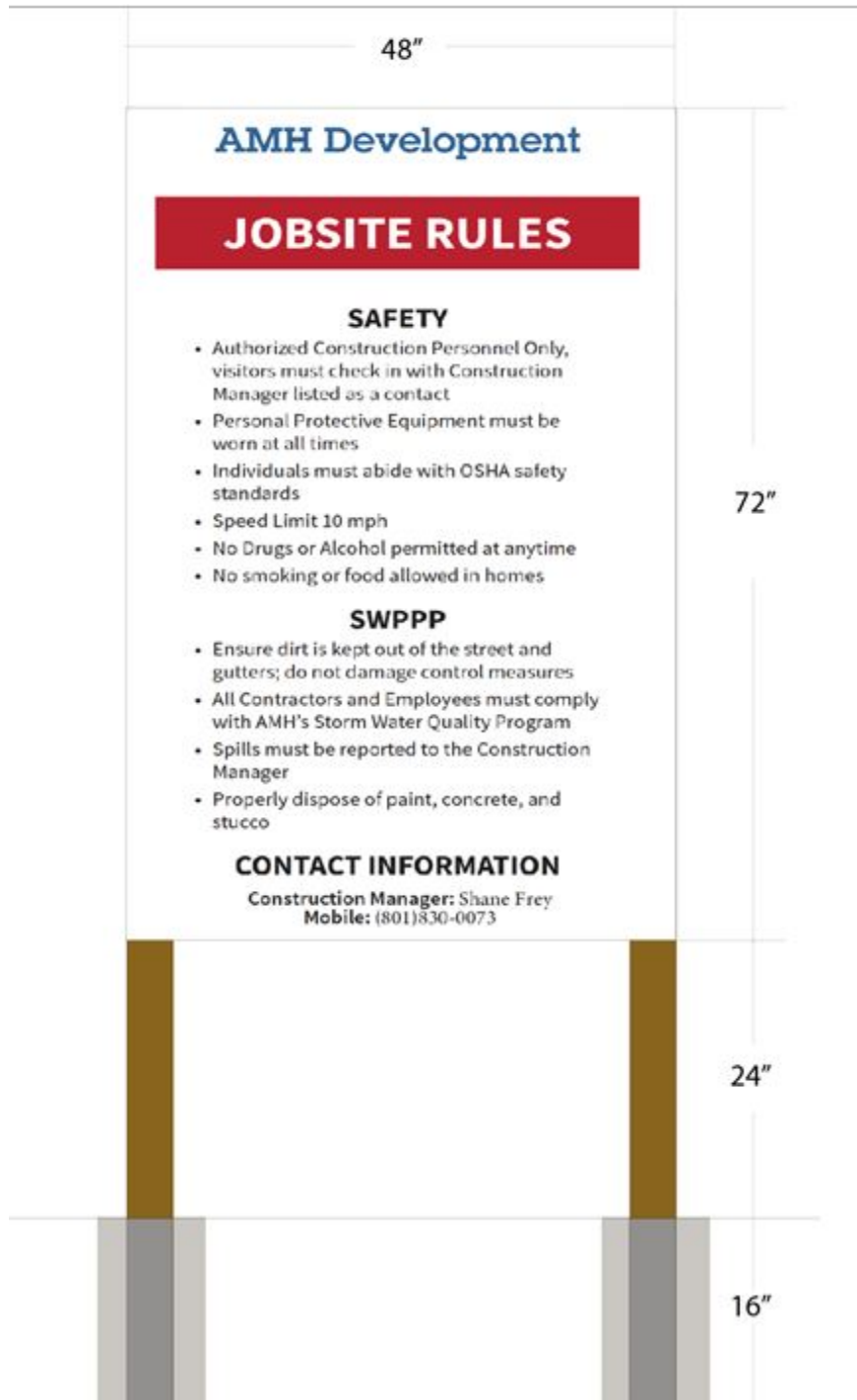


Materials: 1 4'x6' aluminum composite E-panel with provided vinyl overlay- single sided on 2'4"x4" treated wood posts



S00-37-01W - 171.51 ft

N SARATOGA RD

N00-32-00E - 116.24 ft

N45-16-01E - 19 ft
30' 1"
101'-10"
41'-8"

S00-00-03W - 129.59 ft

N00-00-03E - 129.59 ft

location of sign

S00-00-02W - 129.54 ft

N00-00-02E - 129.54 ft

49:922:0104
AMH PERELLE MEADOWS TRS LLC...
1213 E WHITE ST - SARATOGA SPRINGS
Value: \$0 - 0.21 acres
Entry# 104656-2018

S89-57-46W - 28.81 ft

N89-57-46E - 653.51 ft

S89-57-46W - 70 ft



PERELLE MEADOWS PHASE 1
SARATOGA SPRINGS, UTAH COUNTY, UTAH
LYING AND SITUATE IN THE WEST HALF OF SECTION 19,
TOWNSHIP 5 SOUTH, RANGE 1 EAST, SALT LAKE BASE AND MERIDIAN

PLAT NOTE:
FRONT LOT CORNERS ARE RIVETS, NAILS
OR LEAD PLUGS SET IN THE TOP OF CURB
ON PROPERTY LINES PROLONGED.



- LEGEND**
- 29 28 = SECTION CORNER & SECTION LINE
 - 32 33 = PARCEL BOUNDARIES
 - = RIGHT OF WAY LINES
 - = EXTANT RIGHT OF WAY LINES
 - = ROAD CENTERLINES
 - = EXTANT ROAD CENTERLINES
 - = PUBLIC UTILITY EASEMENT
 - = BUILDING SETBACK LINES
 - = ADJOINING RECORDS OF SURVEY
 - = ADJOINING PARCELS DEED LINES
 - = DIMENSION LINES
 - = FOUND #5 REBAR AND CAP STAMPED "ALM"
 - = SET #5 REBAR 24" LONG WITH CAP (TO BE SET)
 - ⊕ = CENTERLINE MONUMENT TO BE SET
 - ROS = RECORD OF SURVEY
 - BLA = BOUNDARY LINE AGREEMENT
 - (A) (B) = COMMON OPEN SPACE PARCEL # - TO BE MAINTAINED BY HOA
 - ☆ = LIGHT POLE
 - ⊕ = FIRE HYDRANT

NOTE:
ALL STREETS SHOWN HEREON ARE PUBLIC ROADWAYS

RADIAL LINE TABLE

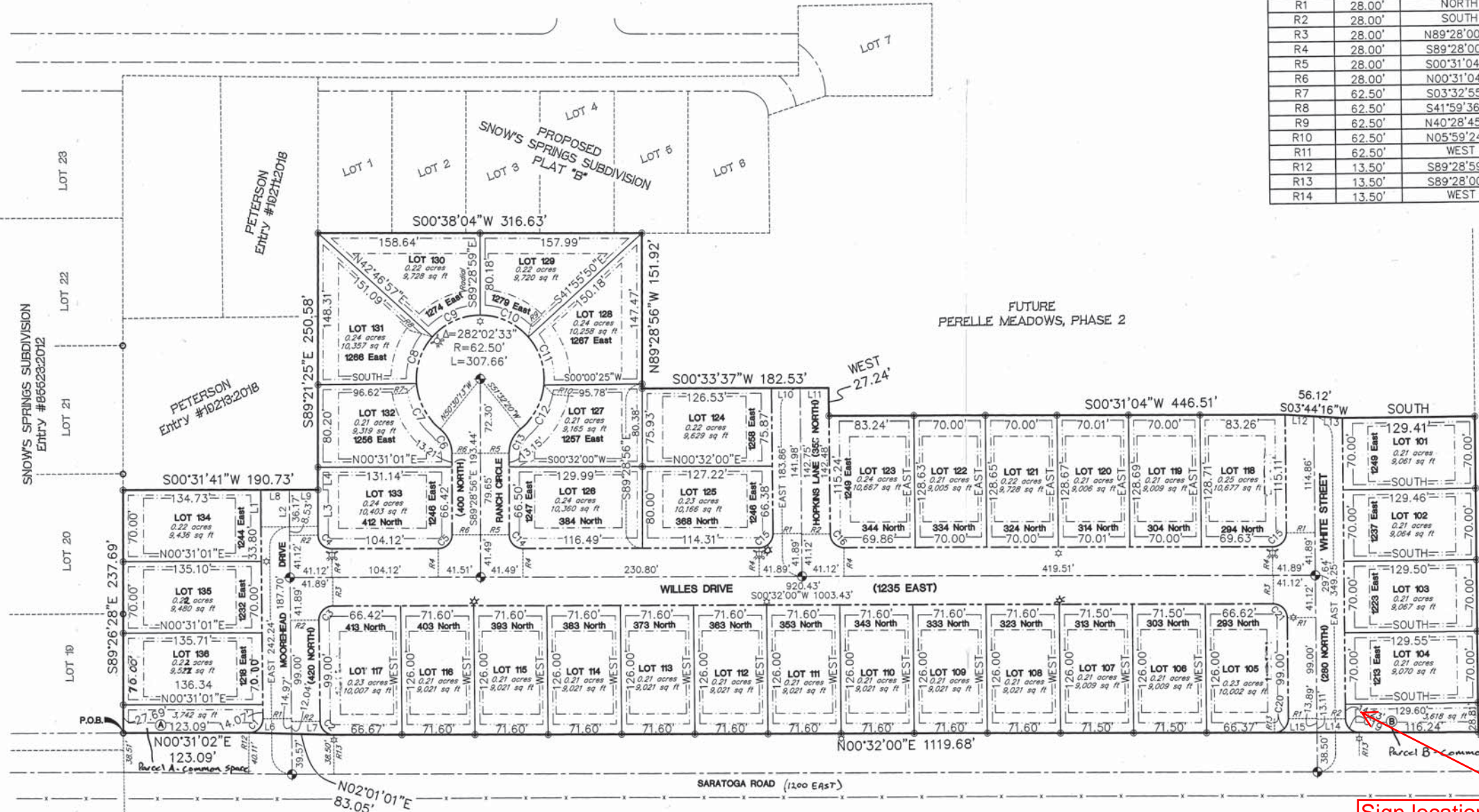
LINE	LENGTH	BEARING
R1	28.00'	NORTH
R2	28.00'	SOUTH
R3	28.00'	N89°28'00"W
R4	28.00'	S89°28'00"E
R5	28.00'	S00°31'04"W
R6	28.00'	N00°31'04"E
R7	62.50'	S03°32'55"E
R8	62.50'	S41°59'36"W
R9	62.50'	N40°28'45"W
R10	62.50'	N05°59'24"E
R11	62.50'	WEST
R12	13.50'	S89°28'59"E
R13	13.50'	S89°28'00"E
R14	13.50'	WEST

LINE TABLE

LINE	LENGTH	BEARING
L1	36.17'	S89°28'19"E
L2	36.09'	S89°28'19"E
L3	35.91'	S89°28'19"E
L4	22.07'	S89°21'25"E
L6	41.65'	N02°01'01"E
L7	41.40'	N02°01'01"E
L8	28.00'	S00°31'41"W
L9	28.00'	S00°31'41"W
L10	28.00'	S00°33'37"W
L11	28.00'	S00°33'37"W
L12	28.00'	S00°31'04"W
L13	28.00'	S00°31'04"W
L14	41.38'	N00°32'00"E
L15	41.63'	N00°32'00"E

CURVE TABLE

CURVE	LENGTH	RADIUS	DELTA
C1	21.33'	13.50'	90°31'01"
C2	21.08'	13.50'	89°28'00"
C3	21.31'	13.50'	90°32'00"
C4	21.08'	13.50'	89°28'00"
C5	21.21'	13.50'	90°00'57"
C6	27.16'	30.50'	51°01'16"
C7	51.22'	62.50'	46°57'18"
C8	49.68'	62.50'	45°32'31"
C9	52.93'	62.50'	48°31'26"
C10	53.45'	62.50'	49°00'14"
C11	50.69'	62.50'	46°28'09"
C12	49.69'	62.50'	45°32'56"
C13	27.16'	30.50'	51°01'16"
C14	21.20'	13.50'	89°59'03"
C15	21.33'	13.50'	90°32'00"
C16	21.08'	13.50'	89°28'00"
C17	21.33'	13.50'	90°32'00"
C19	21.08'	13.50'	89°28'00"
C20	21.33'	13.50'	90°32'00"
C21	21.08'	13.50'	89°28'00"



Sign location located 8' behind sidewalk and outside site triangle.

NOTE: LOTS 104 + 136 MUST PLACE DRIVEWAYS ON EAST SIDE OF LOT

West Quarter Corner of Section 19, Township 5 South, Range 1 East, Salt Lake Base and Meridian. Fnd. Utah County Brass Cap Mon. 6" below ground surface

Southwest Corner of Section 19, Township 5 South, Range 1 East, Salt Lake Base and Meridian. Fnd. Utah County Brass Cap Mon. Flush with ground

Northwest Corner of Section 19, Township 5 South, Range 1 East, Salt Lake Base and Meridian. Fnd. Utah County Brass Cap Mon. Stamped 2017 12" below surface of ground.

BASIS OF BEARING
S00°10'25"E 2651.16' (Measured)
S00°10'37"E 2651.34' (Record)

16888 sheet 2 of 2

