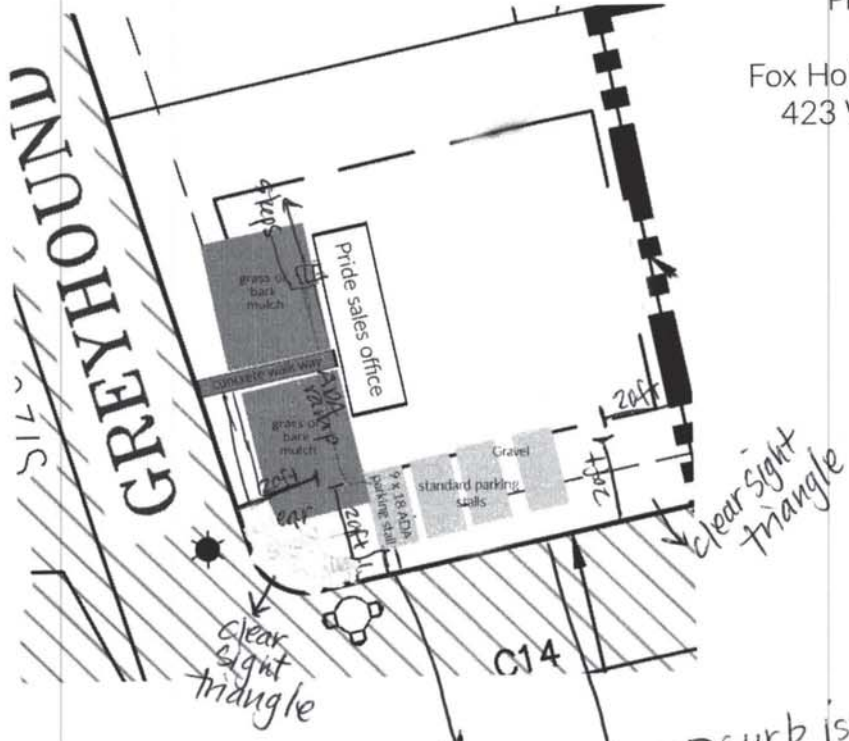
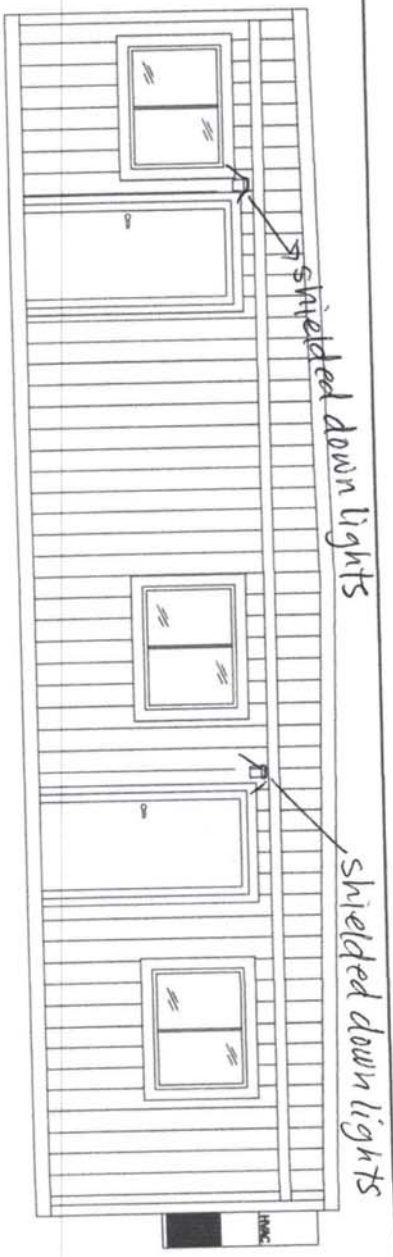
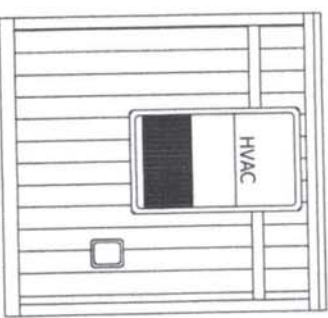
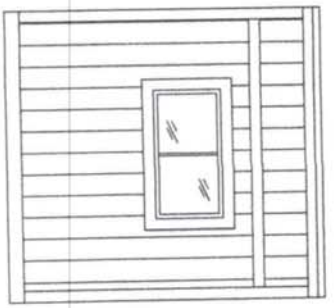


Pride Built Homes
Sales trailer
Fox Hollow Neighborhood #5
423 West Greyhound Rd



will use city
side walk
to get to RAMP
for entrance into
sales office

curb issue: please
direct us on what we
can do to address the
curb for parking?



Water sewer to be connected with the city.

• 440 square feet of office space.

• Two private offices and restroom

• Generous office space for up to eight people.

garbage can thru the city

wood steps

• Two integrated work stations with desktop and file cabinets as well as one plan table.

• Completely insulated and includes a heating and air conditioning system.

ADA ramp

• Vinyl floors are near maintenance free.
• Upgraded interior wall coverings and decorative wood siding for a professional appearance.

Note: Dimensions, and door & window locations shown are nominal. Actual dimensions, layout, and roof slope may vary depending on model or model year selected.



Your Local
Sales Professional
Scott Ravarino
801.200.4472

10' x 44' Mobile Office Building
with Restroom
Delivered ready to use "On Time and On Budget"

Design Space
MODULAR BUILDINGS
From Vision to Reality | On Time and On Budget
www.DesignSpaceModular.com