

THE QUALITY OF LIFE IN SARATOGA SPRINGS, EAGLE MOUNTAIN AND LEHI IS AT RISK!

AN OPEN LETTER ON TRANSPORTATION FROM THE MAYOR OF SARATOGA SPRINGS

Dear Resident and Neighbor:

The population of Northwest Utah County (west Lehi, Saratoga Springs, Eagle Mountain, Cedar Fort, Fairfield) is projected to be 200,000 or more at buildout.

The need to address present and future traffic to and from these communities and the east side of the county has always been urgent and is rapidly growing to a crisis.

The City of Saratoga Springs and the Utah Department of Transportation (UDOT), in cooperation with other communities in Salt Lake and Utah Counties, have been working diligently for the past seven years to create some viable solutions including:

1. Widening of Redwood Road from Bangerter Highway to Center Street in Saratoga Springs.
2. Creation of an arterial road along 1000 South (Lehi address) that will travel from Saratoga Springs through Lehi to American Fork Main Street.
3. A Utah County section of the Mountain View Corridor, a freeway being built to accommodate growth along the west sides of Salt Lake and Utah Counties.

This month the Federal Highway Administration, UDOT, and the Utah Transit Authority released the Draft Environmental Impact Statement concerning the Mountain View Corridor. Included in this draft are three alternatives for connecting the Mountain View Corridor in northwest Utah County to I-15.

Saratoga Springs' and UDOT's preferred alternative consists of a freeway running south along the west side of Redwood Road to the north end of Saratoga Springs. At this location it will then go east across the valley and connect with I-15 at 2100 North in Lehi. At the point where it turns east, access will also be provided to SR 73. (See attached map)

After much deliberation, the Mayor and City Council of Saratoga Springs, with the advice of our professional staff passed a resolution declaring the City's support for the 2100 North Freeway as the **only reasonable alternative** to meet the future transportation needs of northern Utah County.

The 2100 North Alternative provides:

1. Uninterrupted east-west travel to the I-15 corridor and to and from destinations in northern Utah County at the location that best suits the current and future travel needs of residents.
2. This alternative (as shown in UDOT's data) provides the best solution for relieving traffic congestion on Lehi's Main Street.
3. This alternative minimizes the negative effects of large-truck commercial traffic (construction, mining, landfill, delivery) by eliminating the noise and pollution from waits at traffic signals, and by providing a route that removes this traffic from local streets.
4. Provides increased opportunities for local employment and services for communities along the freeway's corridor.

**2100 North is
the best choice
for quickly
moving traffic
to the I-15
corridor**

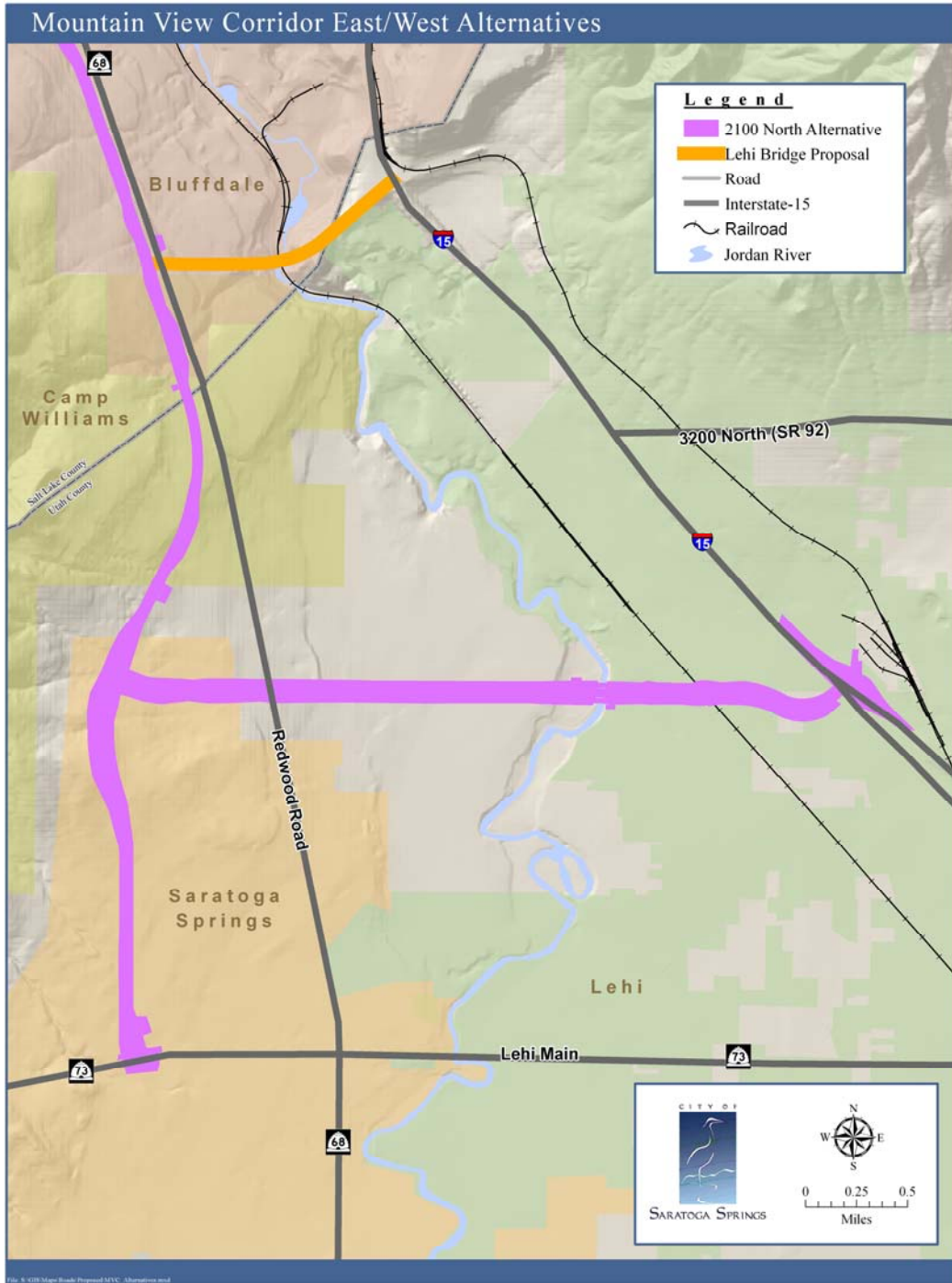
Lehi City has proposed its own alternative for the terminus of the Mountain View Corridor. They wish to move the freeway crossing into Salt Lake County and build a bridge between Redwood Road and I-15 at the point-of-the-mountain. If this alternative were to be considered, it would remove any possibility for uninterrupted travel across northern Utah County.

Lehi City's bridge proposal, if adopted, will have terrible and permanent consequences for the residents of northern Utah County.



Eliminating an east-west freeway in this region will repeat the mistakes that have been made over and over again as growing communities all along the Wasatch Front have fallen victim to a "not-in-my-backyard" mentality. (Witness the daily commute on University Parkway and 800 North in Orem or 90th South and 33rd South in Salt Lake County.)

The preferred alternative is at risk and will affect your quality of life if you do not speak up—now is the time to show your support for the 2100 North Alternative!



The Federal Highway Administration will shortly decide which alternative is selected and their decision will rely heavily on both technical information and community input. Your participation is needed in the process of selecting an alternative. One of the objectives of public participation is seeking a balance of interests. If the residents of Saratoga Springs, Eagle Mountain, and Lehi do not speak up and show their support of the 2100 North Alternative, others may make the decision for us!

WAYS TO COMMENT

1. Email your comment to mountainview@utah.gov
2. Call the toll-free comment line at **(800) 596-2556**
3. Submit a comment using the comment form on the MVC project website at www.udot.utah.gov/mountainview/input.php
4. Give a comment at a public meeting:

Wednesday, November 14, 4 – 8 p.m.
Hunter High School, West Valley City

Thursday, November 15, 4 – 8 p.m.
Willow Creek Middle School, 2275 W 300 N, Lehi

Saturday, November 17, 2 – 6 p.m.
Copper Hills High School, West Jordan

5. Mail your comment to:

Mountain View Corridor
c/o Parsons Brinckerhoff
488 E. Winchester Street, Suite 400
Murray, UT 84107

December 24, 2007 is the cut-off for public comment at which point the lead agencies will select a preferred alternative based on which alternative receives the most public comment. **Your opinion is critical to the future of northern Utah County!**

Sincerely,



Timothy L. Parker, Mayor
City of Saratoga Springs