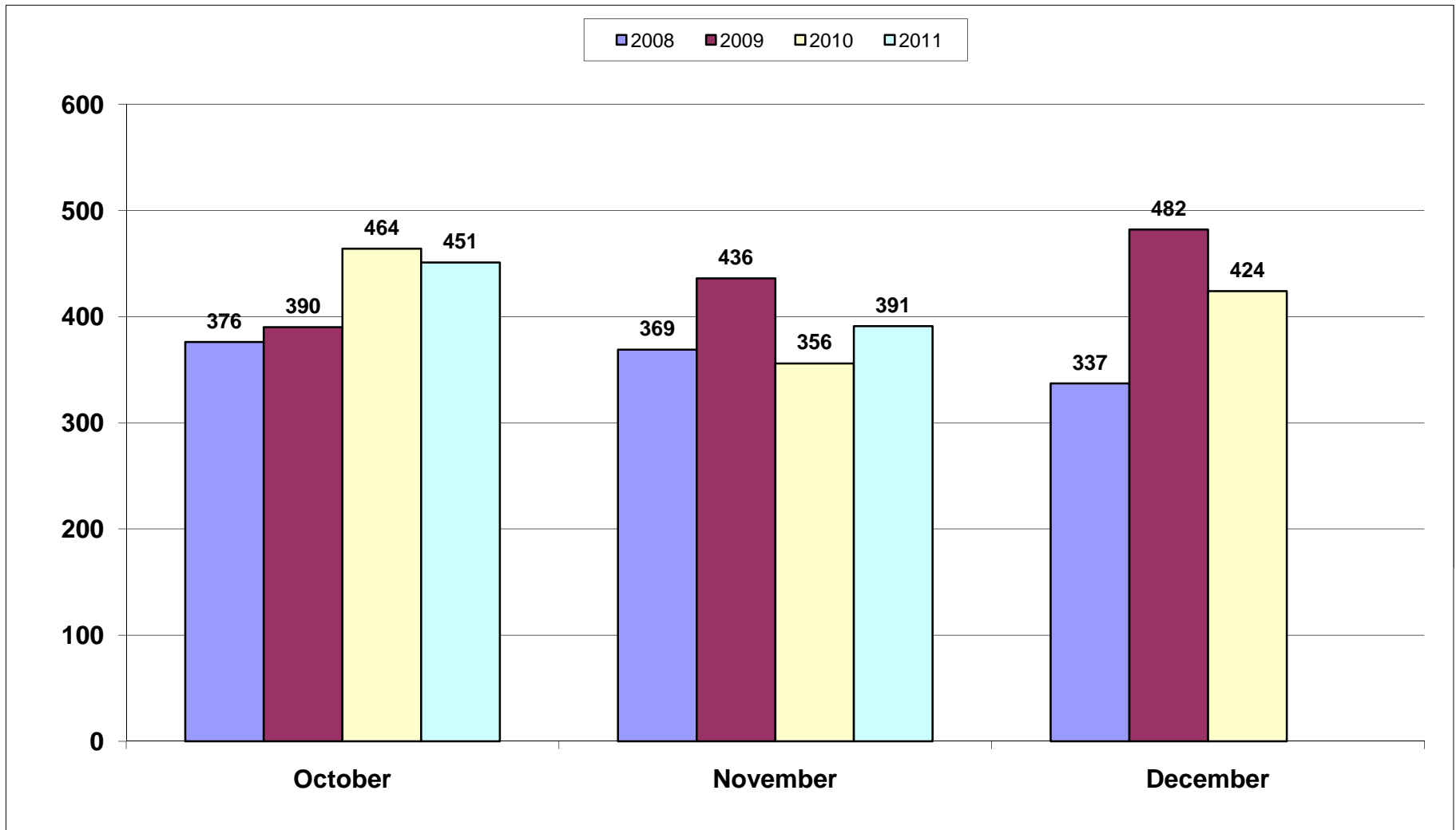
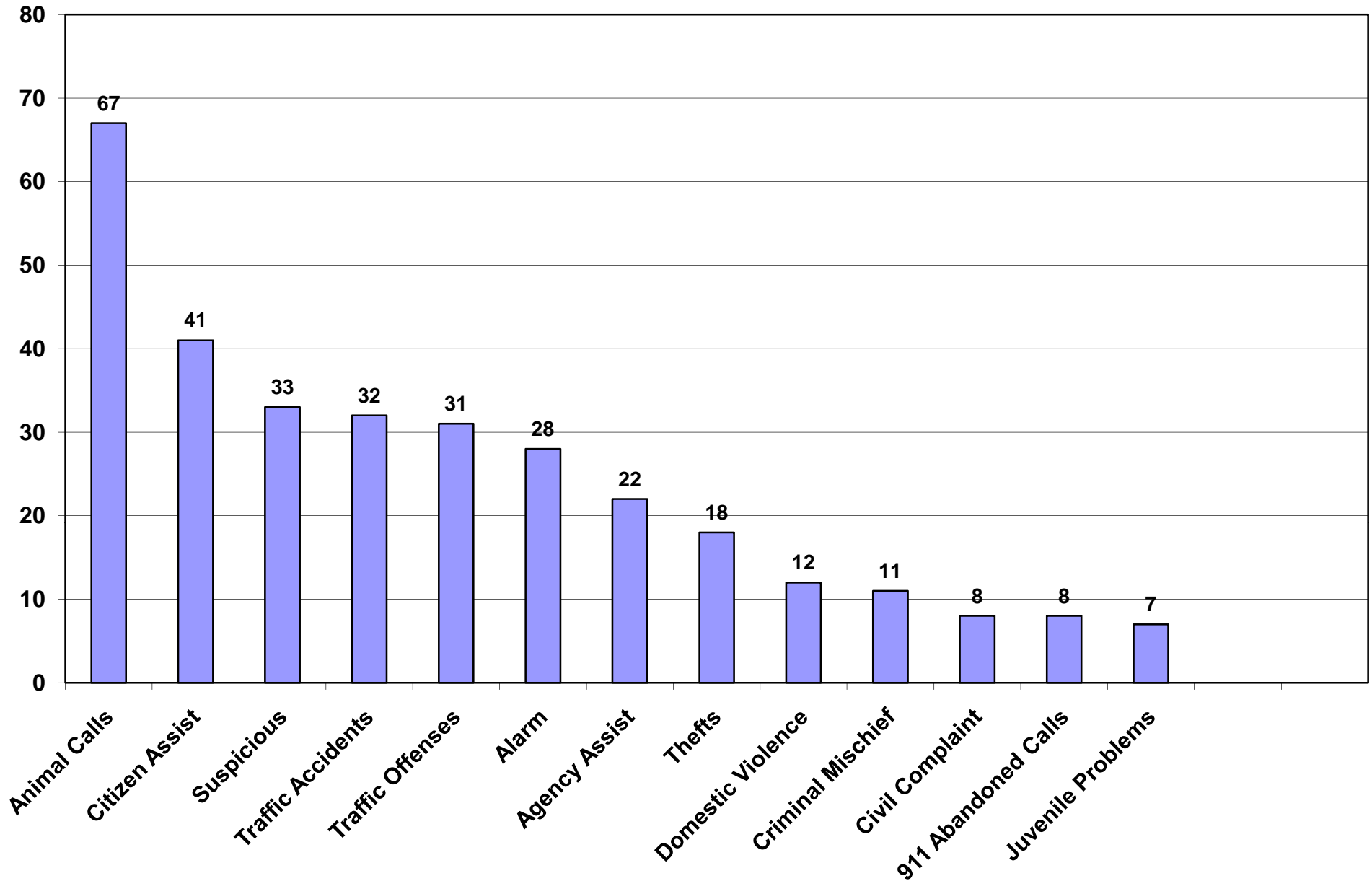


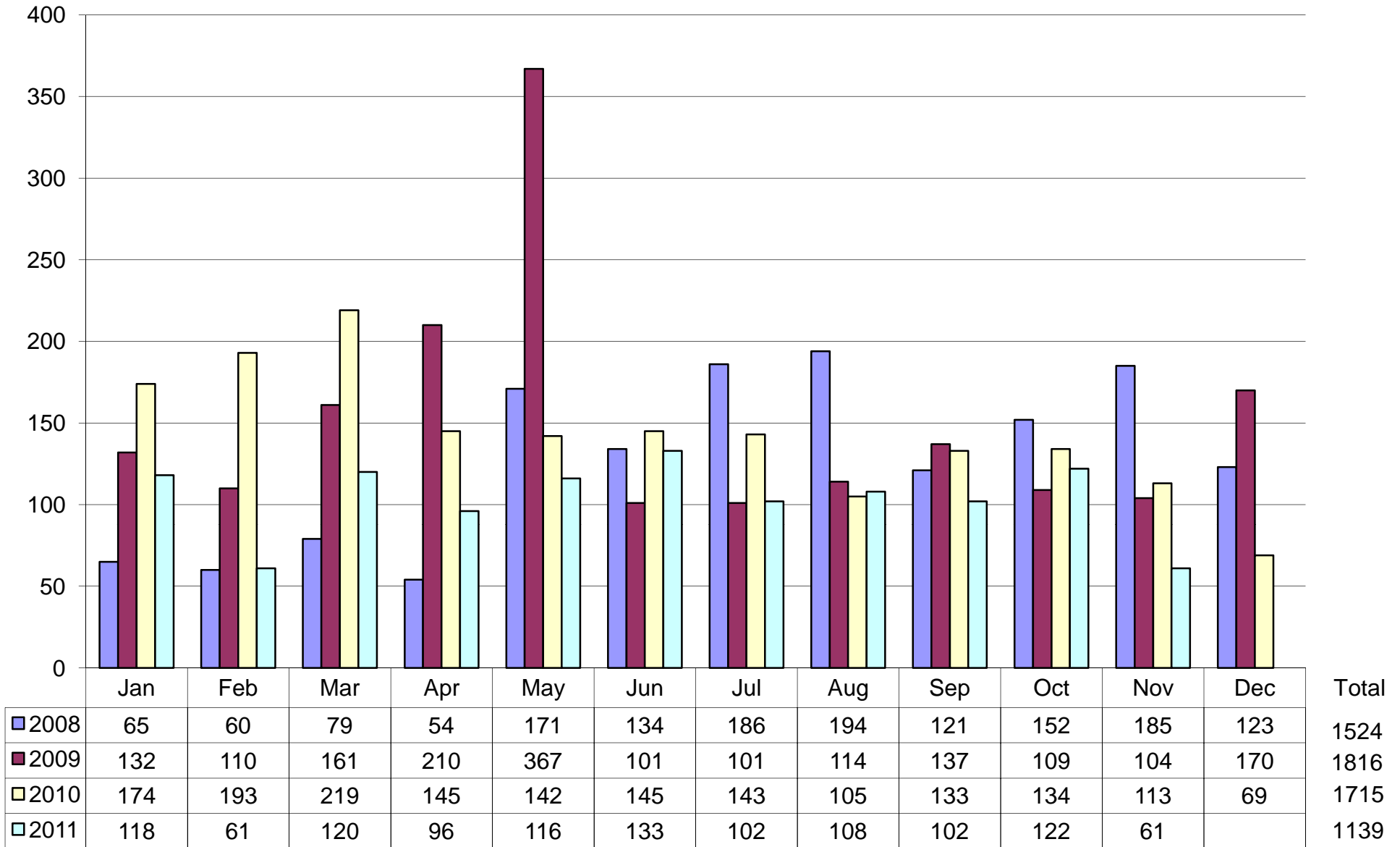
Saratoga Springs Police Department 4th Quarter Stats - Total Incidents



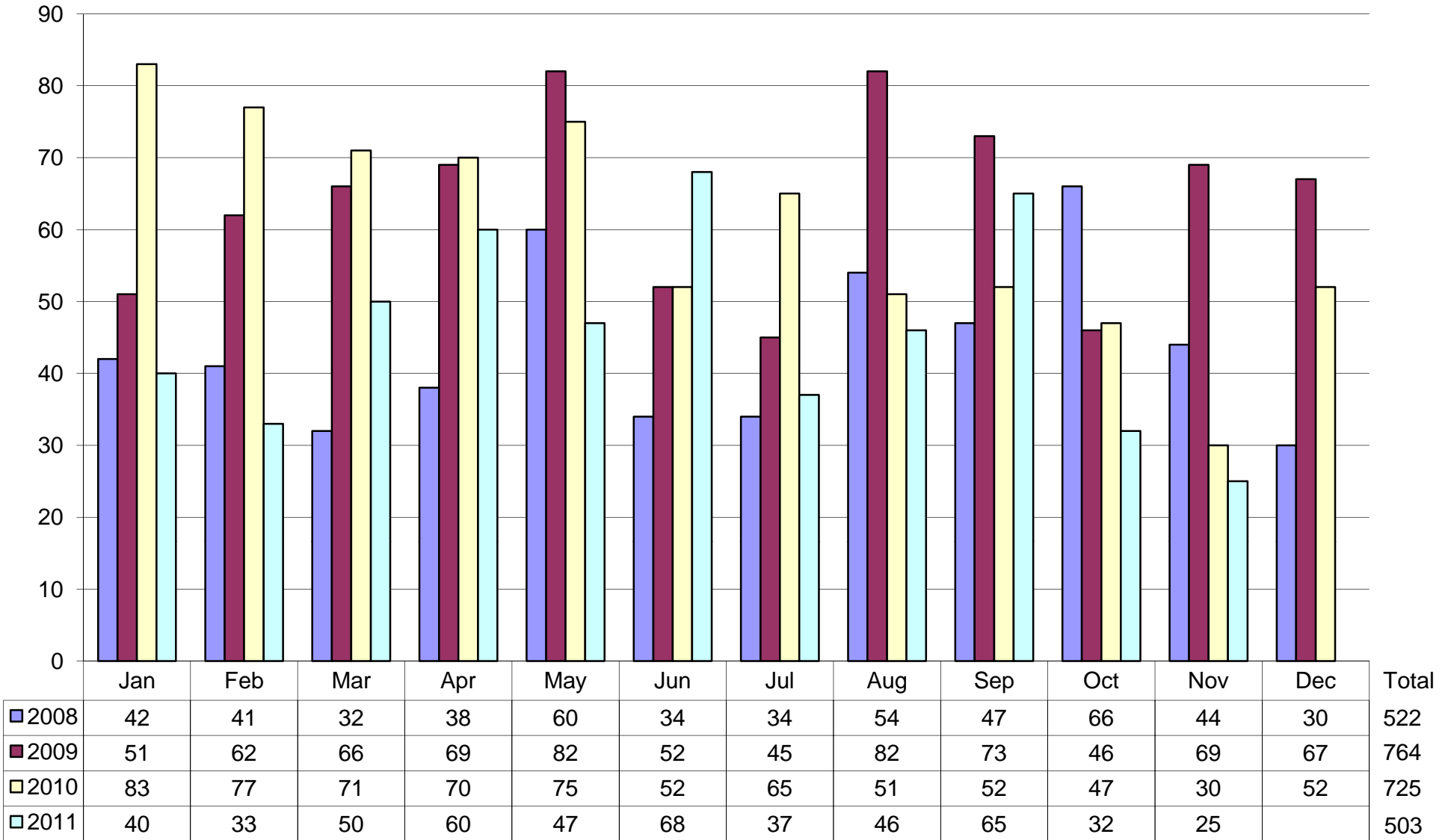
Saratoga Springs Police Department Stats for November 2011



Saratoga Springs Police Department Total Traffic Citations



Saratoga Springs Police Department Total Arrests



SARATOGA SPRINGS POLICE DEPARTMENT

Chief Gary C. Hicken

"Commitment to Service"

INVESTIGATIONS DIVISION MONTHLY SUMMARY

November 1-30, 2011

New and labor intensive cases received by the Investigations Unit increased over 20% from the same month last year and included arson, sex offenses, domestic violence, custodial interference, child abuse, assaults, mental subjects, drug activity, gang activity, and seventeen new investigations involving thefts, identity thefts, frauds, or burglaries, in addition to follow-up on existing active cases. Multiple sex offender registrations were completed at the police department, and gang intelligence was collected.

Among the notable cases worked and/or completed this month included the recovery of a bronze memorial sculpture from a City park and the arrest of the suspects. Metal recyclers and the local media were utilized as part of the investigation.

The Unit placed into a service a computer, printer, and scanner purchased through a grant provided by the state Sex Offender Registry. NOVA graduations were held for the Saratoga Shores and Sage Hills elementary schools.

Detectives received training in child death investigation.

SARATOGA SPRINGS POLICE DEPARTMENT

Investigations Division Monthly Summary

Nov-11		Cases Assigned	Cases Completed	Cleared by Arrest	Active Cases	Authorized Warrants	Cases Screened	School Education	Composite Drawings	Photo Line-ups	Call-outs
INVESTIGATOR											
Champagne	20	15	2	10	0	2	2	0	0	0	4
Hillard-SRO	5	4	3	16	0	3	16	0	0	0	0
Davis-NOVA	12	10	2	17	1	2	26	0	0	2	0
Patterson-SS/BD	12	4	1	18	0	1	0	0	0	1	0
Stidham-UI #1	5	0	0	22	0	0	0	0	0	0	0
Miscellaneous	0	0	0	0	0	0	0	0	0	0	0
C.I.T.	4	0	0	13	0	0	0	0	0	0	0
MONTHLY TOTAL	58	33	8	96	1	8	44	0	3	4	
PREVIOUS MONTH	60	34	7	74	1	7	41	0	0	3	
YEAR-TO-DATE TOTAL	979	1088	249	1331	77	220	564	3	22	106	